

Inflatable Karsten Tent

Manual



KARSTEN TENTEN
SINCE 1981

Contents

1. Tips and maintenance of the tent
 2. Tent setup
 3. Link tent
 4. Bedroom addition
 5. Comfort awning
 6. Extension awning
 7. Front wall
 8. Rain awning
 9. Dismantling the awnings
 10. Dismantling the bedroom addition
 11. Dismantling the tent
 12. Folding the tent
 13. Warranty
-

Inflatable Karsten Tent Manual

You have purchased a quality product from Karsten Tenten B.V.

We recommend reading this manual carefully for optimal camping fun. Store these instructions with your tent.

Set up the tent once before your actual camping trip.

Good luck!

1. Tips and maintenance of the tent

- 1.1** Keep the curved aluminium poles away from high voltage cables.
- 1.2** Make sure the tent is properly tensioned so that water flows down easily.
- 1.3** Wipe the (dry) tent cloth clean regularly with a soft brush to keep it clean. Dirt is a source of food for moulds. It's best not to place your tent underneath trees. Resin, insect secretions or other substances could then settle on your tent, which could prove impossible or at most difficult, to remove. The waterproof properties of the tent surface could also be affected negatively by this. Always allow stains in the tent surface to dry well before you remove them. Always try first to remove stains with a soft brush only and then, if needed, with clean water.
- 1.4** Never use soap or other chemical means to clean the tent cloth because this will affect the waterproof properties of the tent cloth.
- 1.5** Ensure adequate ventilation, even if the tent is not used or seldom used. Ventilation during cooking is essential, because condensation water can lead to mould formation.

- 1.6** The waterproof qualities of the tent surface are thoroughly checked. The biggest threats for the waterproof qualities are suntan oil/cream, dishwashing liquids and detergents or its fumes. You are strongly advised not to wash or dry washing in, on, or near the tent, because this can cause leaks. Cleaning the ground sheet using a detergent should be avoided.
- 1.7** Prevent contact between film windows and the PVC ground sheet. The ground sheet can leave an imprint in the film.
- 1.8** The inner hose is a rubber product. Ensure that this doesn't come into contact With any oils or similar products.
- 1.9** Do not roll up the tent when wet. If there is no other choice, make sure that the tent is unrolled to dry as soon as possible, but always within 24 hours.
- 1.10** It's important that you set up the tent in as dry an environment as possible. Obviously, the tent should be completely dry before it's stored in its bag.
- 1.11** Should you replace the guy lines of the tent, you should only use cotton or washed nylon guy lines. These don't affect the waterproof quality of the cotton tent cloth.

2. Tent setup

When setting up the tent for the first time, all guy lines must still be attached to the tent. These are washed nylon guy lines. For the wings, use the short guy lines with the aluminium triangular tensioners and the aluminium peg rings.

See figure 1.

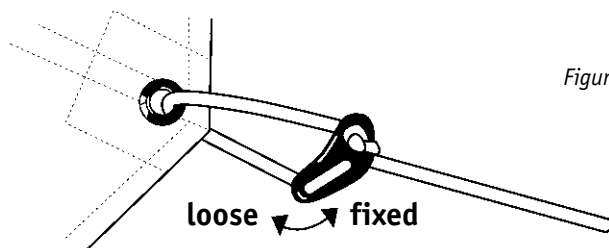


Figure 1.

Install the guy lines before you inflate the tent. The long (storm) lines must be secured to the storm tensioning points on the hoses using the provided snap hooks. These hooks are easily attached to the eyelets using a metal ring when you use an awning for average wind speeds.

- 2.1 Pick a flat and even surface and remove any stones, branches and other sharp objects where necessary. Remove the tent from the tent bag and unroll it. Unfold the tent and secure the ground sheet well and evenly using pegs.
- 2.2 Pump up the air hoses to about 3.5 bar / 50.76 PSI using a foot pump, compressor or compressed air bottle.
- 2.3 Step into the door opening of the tent and pull up the tent at the top of the door. Ensure that the entire front piece comes along. The hoses must run upwards all around. Step into the tent and push the roof ridge upwards using one hand. With your other hand, push the air hoses in the rear of the tent outwards to ensure that the tent stands upright. Now, take the hoses at the roof edge in both hands and pull the tent down in the middle, then push them up again. This gives the tent its nicely rounded form and the wind has less effect on it. Make sure that the hoses run through the tent right by rearranging the tent cloth around it where necessary. In average or strong wind, we recommend that the hoses be pumped up to about 4 bar / 58 PSI. When the hoses are all pumped up, you can replace the dust caps on the valves.
- 2.4 Then assemble the door poles and push these door poles into the tunnels with the eyelet facing down next to the door opening. Pull the narrow Velcro band stuck against the inside of the floor through the eyelet and tighten it. Then refasten the Velcro and zip up the door.

If you use a link tent, don't tension the tent and go to step 3.

If you use a bedroom addition, don't tension the tent and go to step 4.

- 2.5** If you don't use or don't have a link tent or bedroom addition, then secure the wings evenly and tightly, starting with the rear wall. The wall below the wings must be at right angles to the ground. If you want to storm proof the tent, click all storm lines to the tensioning points on the hose using the snap hooks and then tension the guy lines securely. Always try to place guy lines as far as possible from the tent. Use trees etc. if needed.
-

3. Link tent

- 3.1** Lay out the link tent with the door facing the main tent. Position the tent in such a way that the zips and doors are aligned. Firstly, secure the two corners at the main tent (the tents must be as close as possible), then the two other corners.
- 3.2** See step 2.2 to 2.4 to set up the link tent.
- 3.3** Zip both tents together using the linking part and connect the ground sheets using the Velcro tape provided with the tent.
- 3.4** Tension the wings of the main tent and then fasten the upper storm line to the hoses on the left side of the tent. Place these two storm lines as far as possible from the tent and ensure that the tent leans a fraction to the left.
- 3.5** Now, tension the wings of the link tent. If you stand behind the main tent and follow the vertical seam in the middle of the tent, you can see whether the unit is fully upright.
-

4. Bedroom addition

- 4.1** Lay out the bedroom addition with the open end facing the tent. Position the floor of the addition as close as possible against the floor of the tent and ensure that the zips are positioned opposite each other. Now fit the two corners of the bedroom addition to the tent side with pegs.
- 4.2** Then secure the floor of the bedroom addition using pegs. Make sure the floor is nice and tight and at right angles to the tent.
- 4.3** Zip up the bedroom addition to the tent, first the left zipper and then the right one (you can do this from inside the tent) and fasten the zip locks.
- 4.4** Assemble the pre-arched aluminium pole and open both zips of the pole tunnel.
- 4.5** Now slide the pole through the tunnel of the bedroom addition and make sure that an equal length of the curved pole protrudes on both ends of the addition.
- 4.6** On both sides, fit the pole into the metal ground plates which should be secured with two pen pegs and zip up the tunnel while guiding the pole and the zips.
- 4.7** Ensure that the Velcro tape of both ground sheets is well connected and then fit the partitioning into the addition.

- 4.8** Two extra guy lines are included in the peg set of the bedroom addition. These guy lines must be attached at the corners of the ground sheet, where the bedroom addition and tent join each other. Pull the guy line through the D-ring of the bedroom addition and then around the slit hook of the tent (between the cloth and the ground sheet). Then pull and tension these tightly towards each other ensuring that both floors are pulled against each other.
- 4.9** Tension the wings of the main tent and then fasten the upper storm line to the hoses on the left side of the tent. Place these two storm lines as far as possible from the tent and ensure that the tent leans a fraction to the left.
- 4.10** Now, tension the addition using the five guy lines. The outer guy lines should be placed at an angle of 45 degrees to the side wall of the addition. With average wind, secure a guy line to the D-rings situated just above the zip of the pole guide and tighten it on both ends. If you stand behind the main tent and follow the vertical seam in the middle of the tent, you can see whether the unit is fully upright.

5. Comfort awning

- 5.1** If you have a zip-on ground sheet, this should be laid out first. Unfold the ground sheet with the Velcro tape facing the main tent (the length of the Velcro tape strip of the floor of the main tent and that of the loose ground sheet is more or less the same). Place the ground sheet as close as possible against the ground sheet of the tent. First, fasten the two corners at the tent. Ensure that the zip-on ground sheet is centred against the ground sheet of the main tent. You can then fix the other corners ensuring a nice tight unit.
- 5.2** Attach the long guy lines to the rear end of the tent into the upper metal eyelets. Place these lines as far away as possible using pegs. Tension these guy lines very tightly making sure that the tent leans back slightly. Tensioning the comfort awning and/or front wall proportionately will help maintain the necessary spherical form of the tent.

- 5.3** Now, take the comfort awning from the case and look for the zip where no zip cover was sewn on to. Find the centre and then first zip the left and then the right side of the comfort awning to the tent and fasten the zip locks at the bottom of the zip. If present, you can now zip the comfort awning to the ground sheet. Tension the front elastics proportionately to the floor of the main tent, down the front pulling the bottom of the awning away from the tent.

See figure 2.

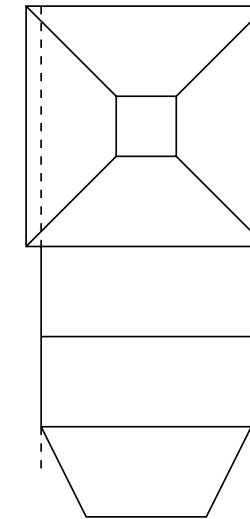


Figure 2.

- 5.4** Assemble the pre-arched aluminium pole and guide it through the pole tunnel on the outside of the Comfort awning (make sure both pole tunnels are zipped open completely). Start at the end without any adjustment.

Place the both ends of the pole in the eyelets on both sides at the bottom of the awning. Position the provided ground plates (these can be secured using pegs if necessary) below the flap with eyelets and fit the ends of the pole in the plates.

Loosen the clamp, tighten the pole in height and refasten the clamp ensuring the awning is rigid. Now, carefully zip up the pole tunnels while guiding the pole and zips.

- 5.5** The comfort awning should be secured to the front with guy lines fixed to the PVC triangles (use snap hooks to easily loosen and tighten the guy lines).
- 5.6** Then tension the other anchoring elastics using pegs.

6. Extension awning

- 6.1** Once you have constructed the comfort awning, you can zip on the extension awning. Look for the zip which does not have a zip flap attached and first attach the left zip and then the right zip completely, fastening the zip locks at the bottom of the zip. If present, you can now zip the extension awning to the ground sheet.

- 6.2** Tension the extension awning in line with the ground sheet of the tent and the comfort awning. Place pegs in the front elastics on the left and right hand side of the extension awning and place them away from the tent.

See figure 2.

- 6.3** Assemble the pre-arched aluminium pole and guide it through the tunnel on the outside of the Extension awning (make sure both tunnels are zipped open completely). Start at the end without any adjustment. **Place both ends of the pole in the eyelets on both sides at the bottom of the awning. Position the provided ground plates (these can be secured using pegs if necessary) below the flap with eyelets and fit the ends of the pole in the plates.**
- Loosen the clamp, tighten the pole in height and refasten the clamp ensuring the awning is rigid. Now, carefully zip up the tunnels while guiding the pole and zips.

- 6.4** The extension awning should be tensioned at the front with guy lines in the PVC triangles. For this, you can use the guy lines of the comfort awning which are easily adjusted using the snap hooks.
- 6.5** Then tension the rest of the anchoring elastics using pegs.

7. Front wall

- 7.1** Find the centre of the wall and then first zip the left side and then the right to the tent and fasten the zip locks at the bottom of the zips. If present, you can now zip the front wall to the ground sheet.
- 7.2** Close the two vertical zips in the centre of the front wall and position a peg in line with these zips (on guy lines) to ensure that the complete unit is pulled tightly to the front. Then secure the other anchoring elastics using pegs.
- 7.3** By completely unzipping the two centre zips of the front wall, you can create an awning using the poles provided.
-

8. Rain awning

- 8.1** Once you have assembled the comfort awning and front wall or comfort awning, extension awning and the front wall, zip the rain awning to the comfort or extension awning and fasten the zip lock at the end of the zip.
- 8.2** Slide the roof lift through the hose at the front of the rain awning. Take the awning poles supplied with the front wall and place these in the eyelets at the end of the roof lift.
- 8.3** Then fit the ends of the poles in the eyelets of the rain awning and tension the roof lift.
- 8.4** Then tension the poles to the front using guy lines.

9. Dismantling the awnings

- 9.1** Dismantling occurs in reverse order.
-

10. Dismantling occurs in reverse order

- 10.1** First, remove all guy lines from the bedroom addition and if necessary, remove the partitioning wall from the addition.
 - 10.2** Unzip both pole tunnel zips. Leave these zips open!
 - 10.3** Then remove the pole from the tunnel. Don't forget the ground plates!
 - 10.4** Now undo the zips between the addition and the tent. First the right hand zip, then the left hand zip. Lay out the tent cloth on the ground so that it's smooth and flat, and place the guy lines on top of the tent.
 - 10.5** Remove all pegs from the ground sheet and loosen the Velcro tape between both the ground sheets.
 - 10.6** Fold both sides of the addition a quarter of the way to the centre. Then fold once again down the centre and then roll the addition up tightly, starting at the back, in the direction of the main tent.
 - 10.7** Leave the roll on the ground and pull the tent bag over the roll. Turn the roll with the tent bag half a turn and zip up the bag. Don't forget to return the partitioning wall, the curved pole, both ground plates and all pegs to the tent bag. To prevent damage, you can best roll up loose components inside the bedroom addition.
-

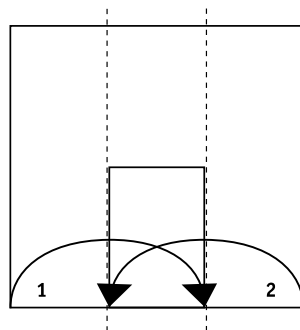
11. Dismantling of the tent

- 11.1** Release all guy lines and remove all pegs from the ground. Leave the 4 pegs of the ground sheet. Remove the door poles from the pole tunnels next to the door zips. Don't forget to loosen the Velcro tape and unscrew the dust caps on the valves. Make sure the door is zipped open and is hanging down loosely.
 - 11.2** Unscrew the inner valves from the valves (anti-clockwise) with the supplied silver coloured fork. Take care to not let them spring loose and so you don't lose them by accident. The tent will now sag down by itself. Wait a few more moments to allow as much air as possible to be released.
 - 11.3** Step into the door opening. Grab the top of the tent at the hoses and pull it to the front of the tent. The rear end of the tent will now settle down smoothly.
 - 11.4** Now push the top of the tent over and pull it to the rear end of the tent. The front of the tent will now also settle down smoothly. Fold the door up with a few turns and put it down on the tent surface (when you set up the tent again, you can easily step into the door opening). Place all guy lines neatly on the tent.
 - 11.5** Now, pull the 4 pegs at the corners from the ground. For folding the tent, refer to the diagram below.
-

12. Folding the tent

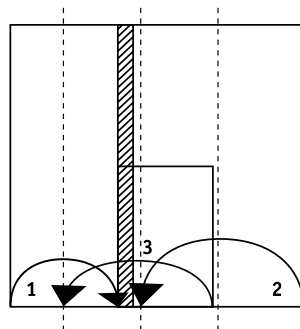
Type: 200 and 220

1. Fold the left-hand side of the tent in one third, turn the right-hand side over this part so that the tent is folded up in three.
2. Roll the tent, beginning at the rear end, in the direction of the valves.



Type: 240 to 380

1. Fold the left-hand side up to the left-hand vertical door zip.
2. Then fold in the right-hand side in such a way that a small area remains between both sides (shaded).
3. Now fold the package in two. This way the tent is folded in four. Roll up the tent, beginning at the rear end, in the direction of the valves.



- 12.1 Screw the inner valves in the outer valves (clockwise) using the provided metal dust cap with fork. The rubber O ring of the inner valve must be facing inwards. Don't tighten the inner valves too much, otherwise the thread could be damaged. Lastly, replace the dust caps on the valves again to prevent damage.
- 12.2 Leaving the tent lying on the ground, turn the tent bag over the roll and then turn the tent bag with half a roll. Zip up the tent bag. Don't forget to pack the pegs, door poles and awning parts if used. To prevent damage, you can best roll up the loose components inside the tent.

13. Warranty

- 13.1** Karsten Tenten B.V. guarantees a thorough construction. A warranty period of 60 months applies for any construction and/or material faults in products from our own workshop. Products that aren't produced in our own workshops have a warranty period of 12 months. The warranty doesn't cover normal wear and tear.
- 13.2** During this period, depending on the warranty specifications below, a defect arising from normal use will be repaired or the part replaced free of charge.
- 13.3** Karsten Tenten B.V. will call on the importer/manufacturer warranty for major repairs. They will decide whether repairs will be carried out on site or if the article must be returned to the importer/manufacturer.

- 13.4** These expenses and risk of transport will be for the account of the buyer. The warranty doesn't cover defects and consequences that are in the opinion of Karsten Tenten B.V. caused by: wear and tear, incorrect use, rough treatment, neglect or overload, letting or lending. This includes damage resulting from insect secretions and the resin of trees and moulds caused by bad ventilation or damp storage of the tent, as well as external calamities such as extreme weather conditions like strong wind or extreme heat. The warranty is void as well when damage is caused by oils, greases, detergents, etc.
- 13.5** The warranty is null and void in the event of changes or repairs made by you. Any expenses arising from temporarily being without the article can't be charged.
- 13.6** Karsten Tenten B.V.'s liability is expressly limited to the warranty indicated above. Karsten Tenten B.V. can't be held liable in any way for any damages or harm caused to people or property. Even if this is due to an error or fault in the material sold.

This warranty is non-transferable.

A stylized graphic of a tent, represented by a white inverted triangle with a white circle in the center, set against a dark green background.

Superior quality from Holland

Passion, craftsmanship and attention to detail
are the ingredients of our superior quality tents.

www.karstententen.nl